



X2

GRANDITALIA

DOCUMENTAZIONE PROVVISORIA

PARTI DI RICAMBIO
PIECES DETACHEES
SPARE PARTS
ERSATZTEILE
LISTA DE RECAMBIOS
PEÇAS SOBRESSALENTES

MACCHINA PER CAFFÉ SUPERAUTOMATICA
MACHINE A CAFE TOUT-AUTO
FULLY AUTOMATIC COFFEE MAHINE
VOLLAUTOMATISCHE KAFFEMASCHINE
MAQUINA POR CAFÉ SUPERAUTOMÁTICA
MAQUINA PARA CAFÉ SUPER-AUTOMÁTICA

ESQUEMA HIDRAULICO ESQUEMA HIDRÁULICO	HYDRAULIC SCHEME HYDRAULISCHE SCHALTPLANE	SCHEMA IDRAULICO SCHEMA HYDRAULIQUE	ED. 09-06 AUSGABE	TAB. 791F-01
CARROCERIA	COACHWORK	CARROZZERIA	ED. 09-06 AUSGABE	TAB. 791F-02
ESTRUTURA	KAROSSERIE	CARROSSERIE		
CARROCERIA	COACHWORK	CARROZZERIA	ED. 09-06 AUSGABE	TAB. 791F-03
ESTRUTURA	KAROSSERIE	CARROSSERIE		
CARROCERIA	COACHWORK	CARROZZERIA	ED. 09-06 AUSGABE	TAB. 791F-04
ESTRUTURA	KAROSSERIE	CARROSSERIE		
CARROCERIA	COACHWORK	CARROZZERIA	ED. 09-06 AUSGABE	TAB. 791F-05
ESTRUTURA	KAROSSERIE	CARROSSERIE		
CARROCERIA	COACHWORK	CARROZZERIA	ED. 09-06 AUSGABE	TAB. 791F-06
ESTRUTURA	KAROSSERIE	CARROSSERIE		
EQUIPO DE CALDERA/RESISTENCIA EQUIPAMENTO DA CALDEIRA/RESISTÊNCIA	BOILER EQUIPMENT/RESISTANCE KESSEL-AUSRÜSTUNG/HEIZWIDERSTAND	EQUIPAGGIAMENTO CALDAIA/RESISTENZA EQUIPEMENT CHAUDIERE/RÉSISTANCE	ED. 09-06 AUSGABE	TAB. 791F-07
EQUIPO DE CALDERA EQUIPAMENTO DA CALDEIRA	BOILER EQUIPMENT KESSEL-AUSRÜSTUNG	EQUIPAGGIAMENTO CALDAIA EQUIPEMENT CHAUDIERE	ED. 09-06 AUSGABE	TAB. 791F-08
INSTALACION HIDRAULICA CAPPUCCINO SISTEMA HIDRÁULICO CAPPUCCINO	CAPPUCCINO HYDRAULIC PIPE SYSTEM LEITUNGEN FÜR CAPPUCCINO	IMPIANTO IDRAULICO CAPPUCCINO CIRCUIT HYDRAULIQUE CAPPUCCINO	ED. 09-06 AUSGABE	TAB. 791F-09
GRIFO DE AGUA Y VAPOR TORNEIRA ÁGUA E VÁPOR	WATER AND STEAM TAPS WASSER-UND DAMPF-HÄHNE	RUBINETTI ACQUA E VAPORE ROBINETS EAU ET VAPEUR	ED. 09-06 AUSGABE	TAB. 791F-10

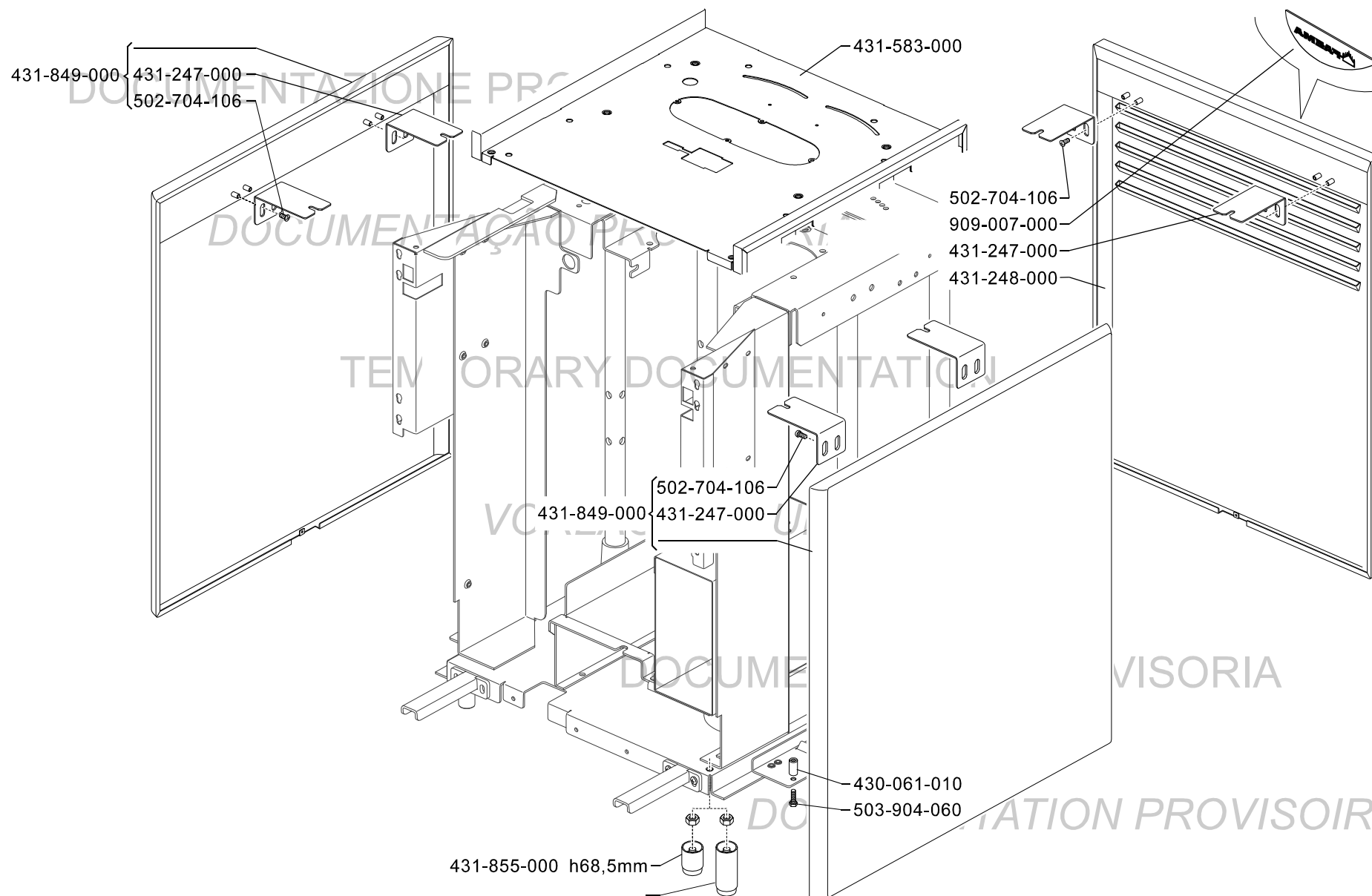


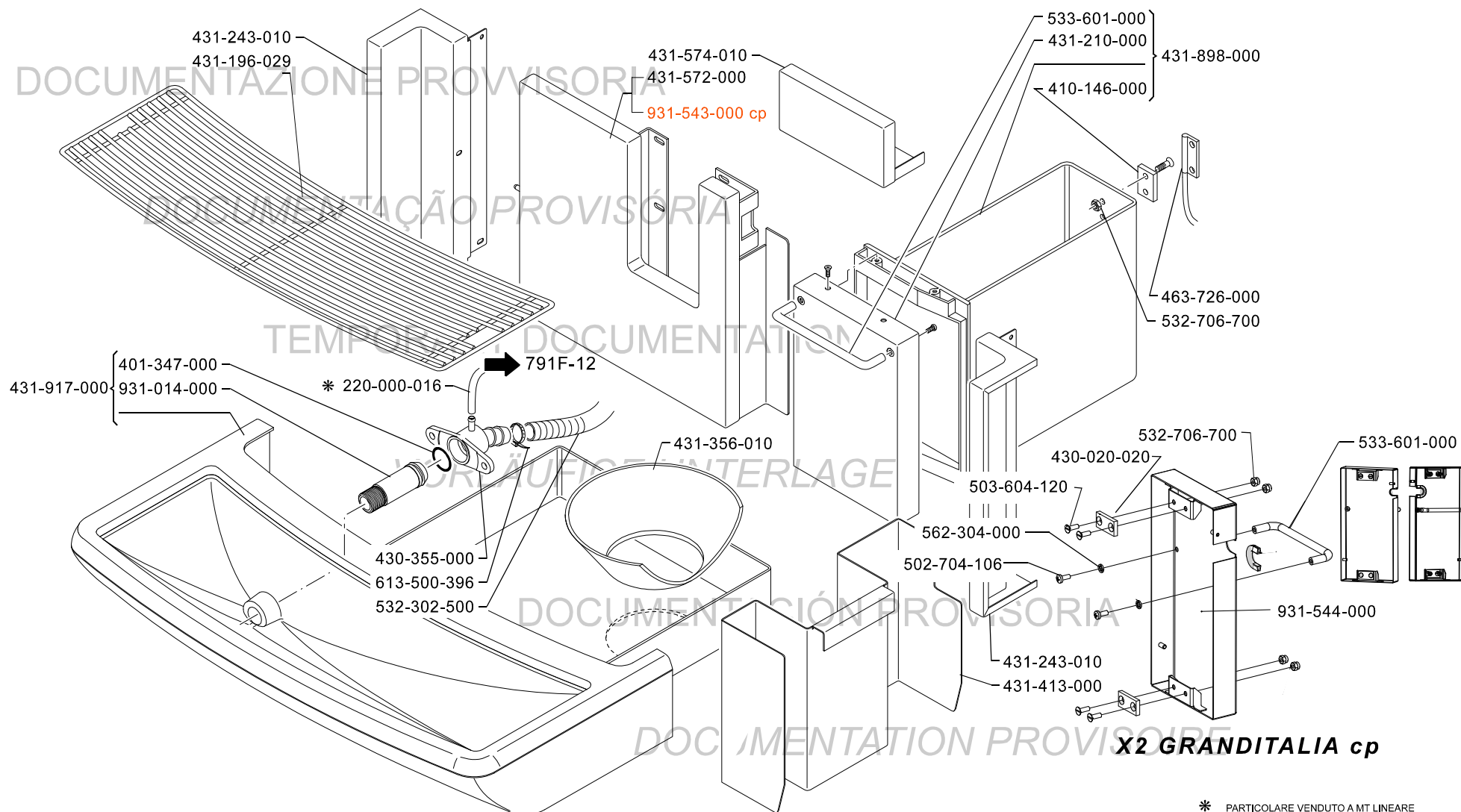
X2



AUTOSTEAM	AUTOSTEAM	AUTOSTEAM	ED. AUSGABE 09-06	TAB. 791F-11
BLOQUEO DE VÁLVULAS	VALVES GROUP	GRUPPO VALVOLE	ED. AUSGABE 09-06	TAB. 791F-12
BLOCO DA VÁLVULA	VENTIL BLOCK	BLOC CLAPET	ED. AUSGABE 09-06	TAB. 791F-13
AGUA ANÃDIDA	WATER AFTER	ACQUA AGGIUNTA	ED. AUSGABE 09-06	TAB. 791F-14
ÁGUA ADICIONADA	ZUSATZWASSER	EAU AJOUTÉE	ED. AUSGABE 09-06	TAB. 791F-15
EROGADOR CAPPUCCINO	CAPPUCCINO DELIVERY SPOUT	EROGATORE CAPPUCCINO	ED. AUSGABE 09-06	TAB. 791F-16
EROGAÇÃO CAPPUCCINO	CAPPUCCINO AUSGABE	BEC VERSEUR CAPPUCCINO	ED. AUSGABE 09-06	TAB. 791F-17
GRUPO EROGADOR	BREWING GROUP	GRUPPO EROGATORE	ED. AUSGABE 09-06	TAB. 791F-18
GRUPO EROGAÇÃO	AUSGABE GRUPPE	GROUPE DEBIT	ED. AUSGABE 09-06	TAB. 791F-19
GRUPO EROGADOR	BREWING GROUP	GRUPPO EROGATORE	ED. AUSGABE 09-06	TAB. 791F-20
GRUPO EROGAÇÃO	AUSGABE GRUPPE	GROUPE DEBIT	ED. AUSGABE 09-06	TAB. 791F-21
GRUPO EROGADOR	BREWING GROUP	GRUPPO EROGATORE	ED. AUSGABE 09-06	TAB. 791F-22
GRUPO EROGAÇÃO	AUSGABE GRUPPE	GROUPE DEBIT	ED. AUSGABE 09-06	TAB. 791F-23
EROGADOR CAFE'	DELIVERY SPOUT	EROGATORE CAFFE'	ED. AUSGABE 09-06	TAB. 791F-24
EROGAÇÃO CAFE'	KAFFEEAUSGABEHAHN	BEC VERSEUR CAFE	ED. AUSGABE 09-06	TAB. 791F-25
BOMBA VOLUMETRICA	VOLUMETRIC PUMP	POMPA VOLUMETRICA	ED. AUSGABE 09-06	TAB. 791F-26
BOMBA VOLUMETRICA	VOLUMETRISCHE PUMPE	POMPE VOLUMETRIQUE	ED. AUSGABE 09-06	TAB. 791F-27
CAJA ELÉTRICA	ELECTRICAL BOX	SCATOLA ELETTRICA	ED. AUSGABE 09-06	TAB. 791F-28
CAIXA ELÉTRICA	SCHALKASTEN	BOÎTE ÉLETRIQUE	ED. AUSGABE 09-06	TAB. 791F-29
CAJA ELÉTRICA	ELECTRICAL BOX	SCATOLA ELETTRICA	ED. AUSGABE 09-06	TAB. 791F-30
CAIXA ELÉTRICA	SCHALKASTEN	BOÎTE ÉLETRIQUE	ED. AUSGABE 09-06	TAB. 791F-31
MOLEDOR DOSIFICADOR / CAMARA DE MOLTURACION	COFFEE-GRINDER/GRINDING SECTION	MACINADOSATORE/CAMERA DI MACINAZIONE	ED. AUSGABE 09-06	TAB. 791F-32
MOINHOS / CÂMARA DE MOAGEN	DOSIERMÜHLE/MAHLSCHEIBENKAMMER	MOULIN-DOSEUR/SECTION DE MOUTURE	ED. AUSGABE 09-06	TAB. 791F-33
MOLEDOR DOSIFICADOR / CAMARA DE MOLTURACION	COFFEE-GRINDER/GRINDING SECTION	MACINADOSATORE/CAMERA DI MACINAZIONE	ED. AUSGABE 09-06	TAB. 791F-34
MOINHOS / CÂMARA DE MOAGEN	DOSIERMÜHLE/MAHLSCHEIBENKAMMER	MOULIN-DOSEUR/SECTION DE MOUTURE	ED. AUSGABE 09-06	TAB. 791F-35
TOLVAS CAFE'	COFFEE HOPPERS	TRAMOGGIA CAFFE'	ED. AUSGABE 09-06	TAB. 791F-36
TREMONHA CAFE'	KAFFEEBOHNENTRICHTER	TREMIES CAFE'	ED. AUSGABE 09-06	TAB. 791F-37

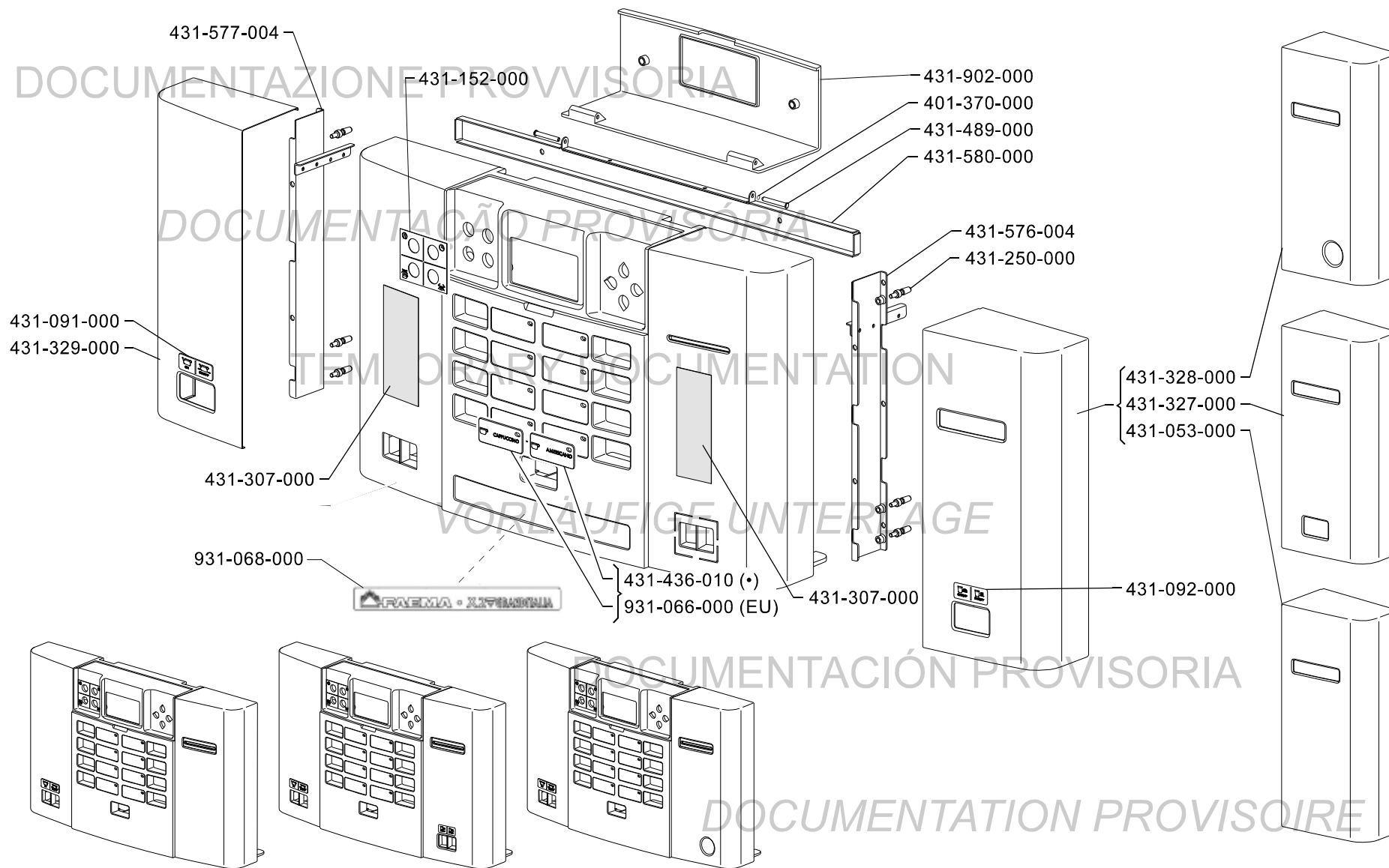
DOCUMENTATION PROVISOIRE

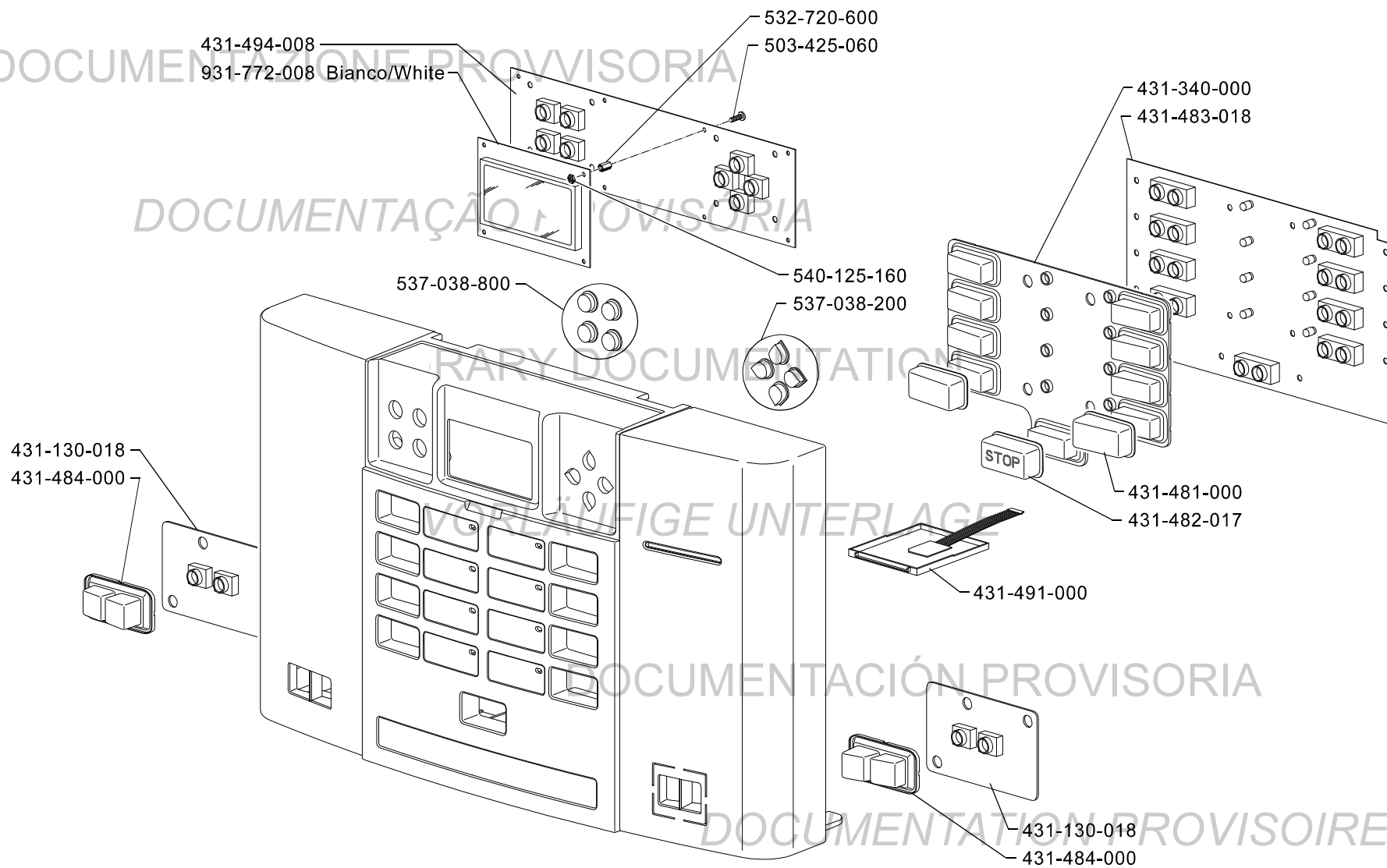


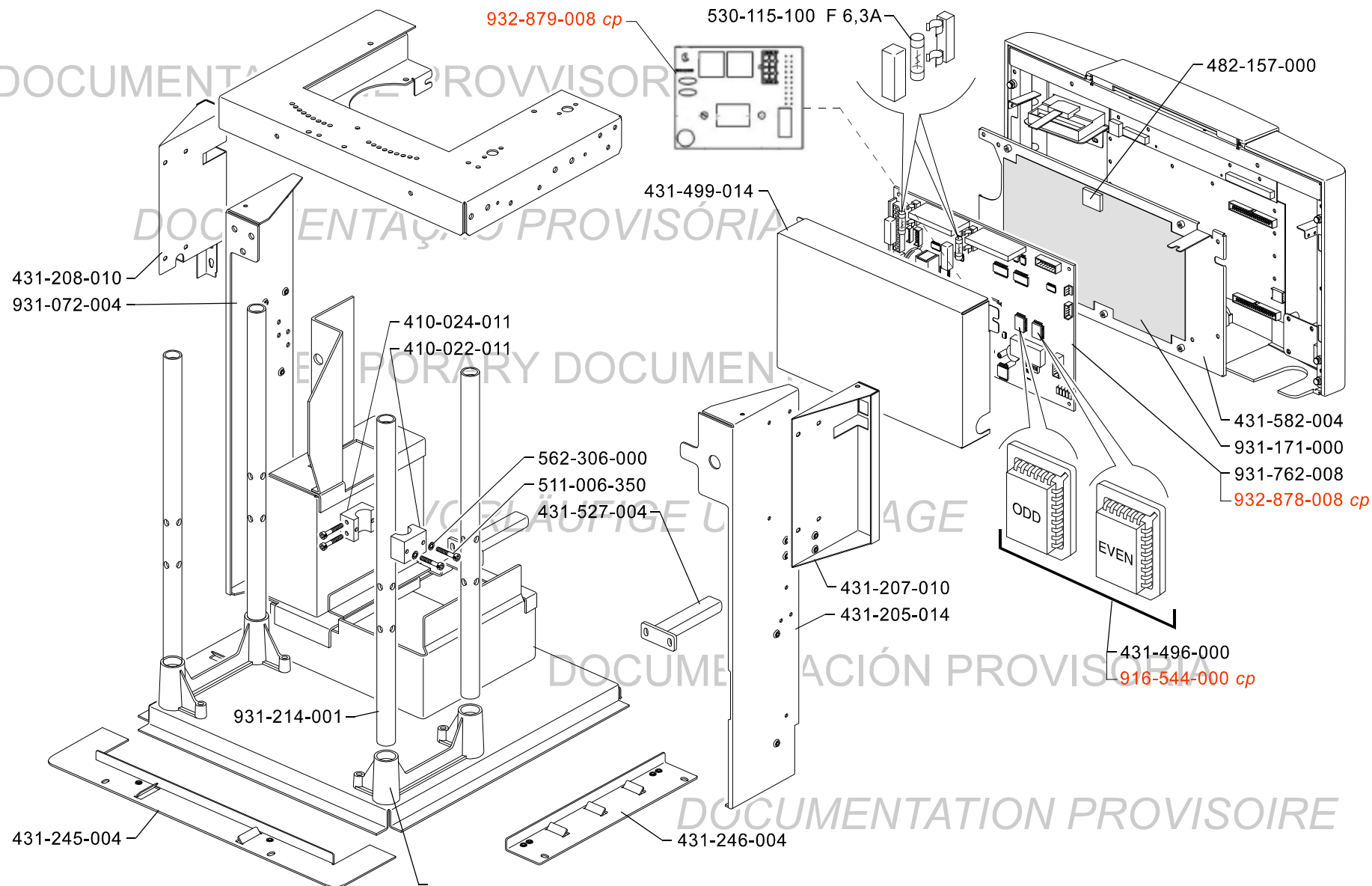


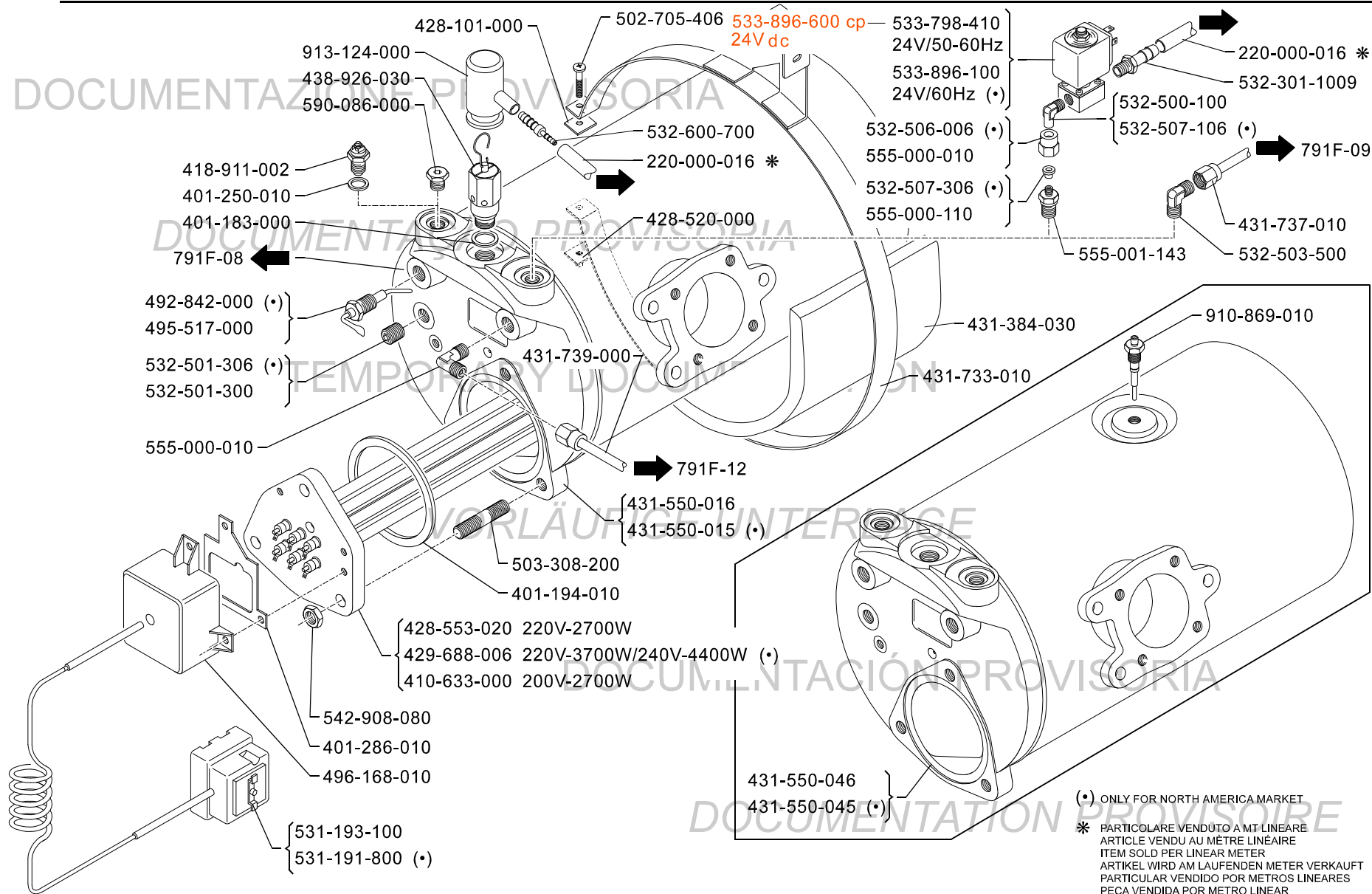
X2 GRANDITALIA cp

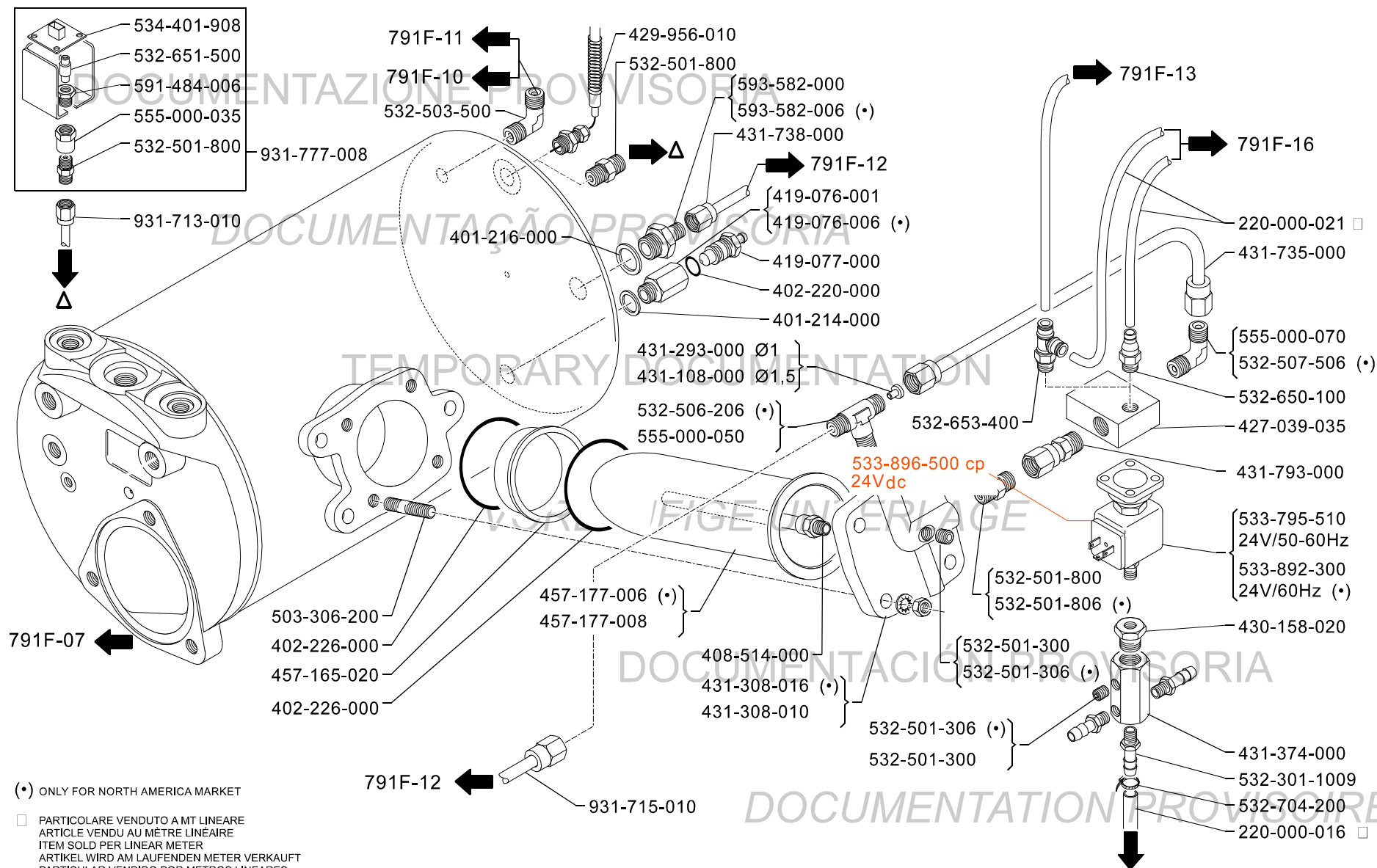
* PARTICOLARE VENDUTO A MT LINEARE
ARTICLE VENDU AU MÈTRE LINÉAIRE
ITEM SOLD PER LINEAR METER
ARTIKEL WIRD AM LAUFENDEN METER VERKAUFT
PARTICULAR VENDIDO POR METROS LINEARES

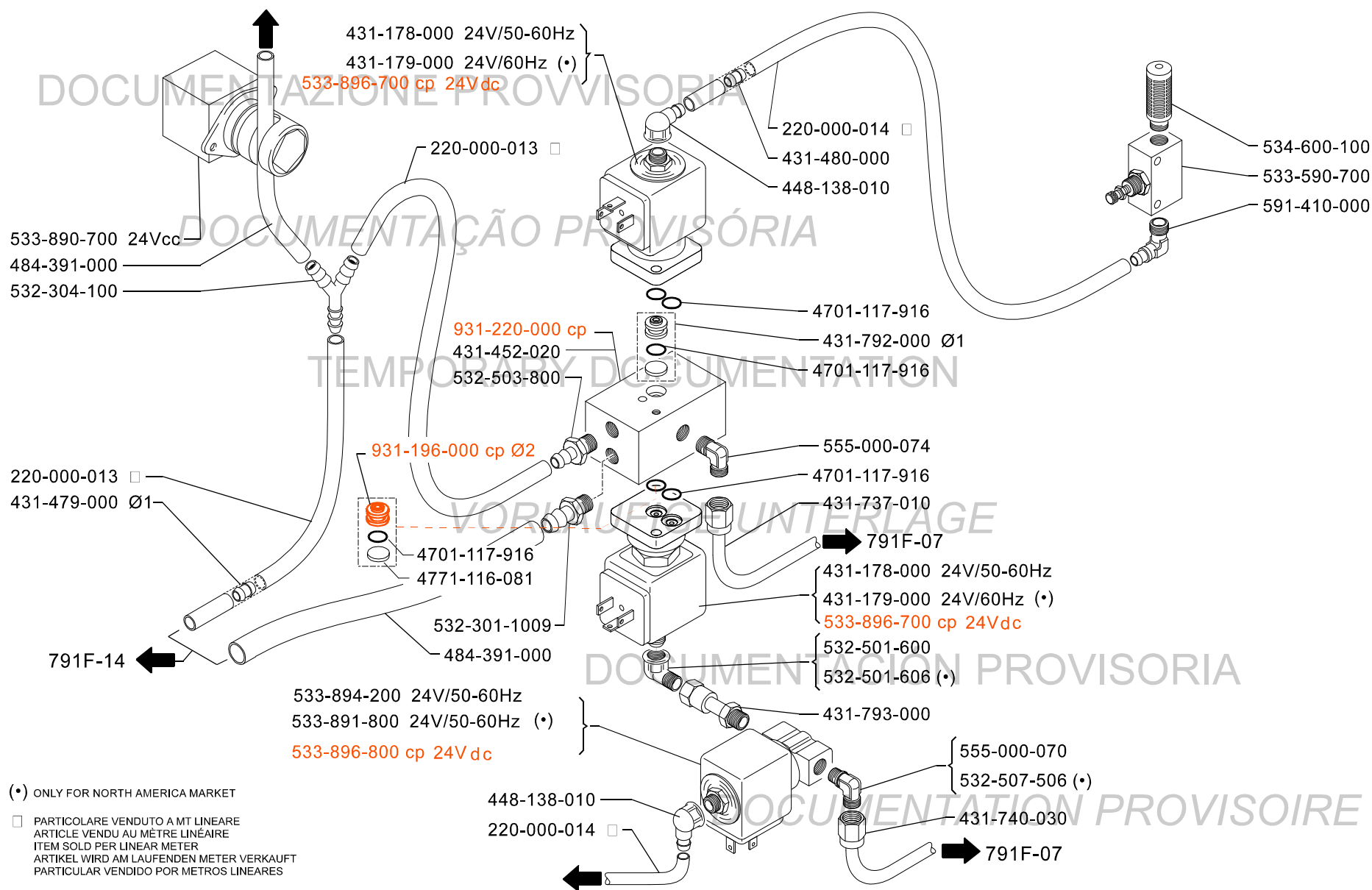


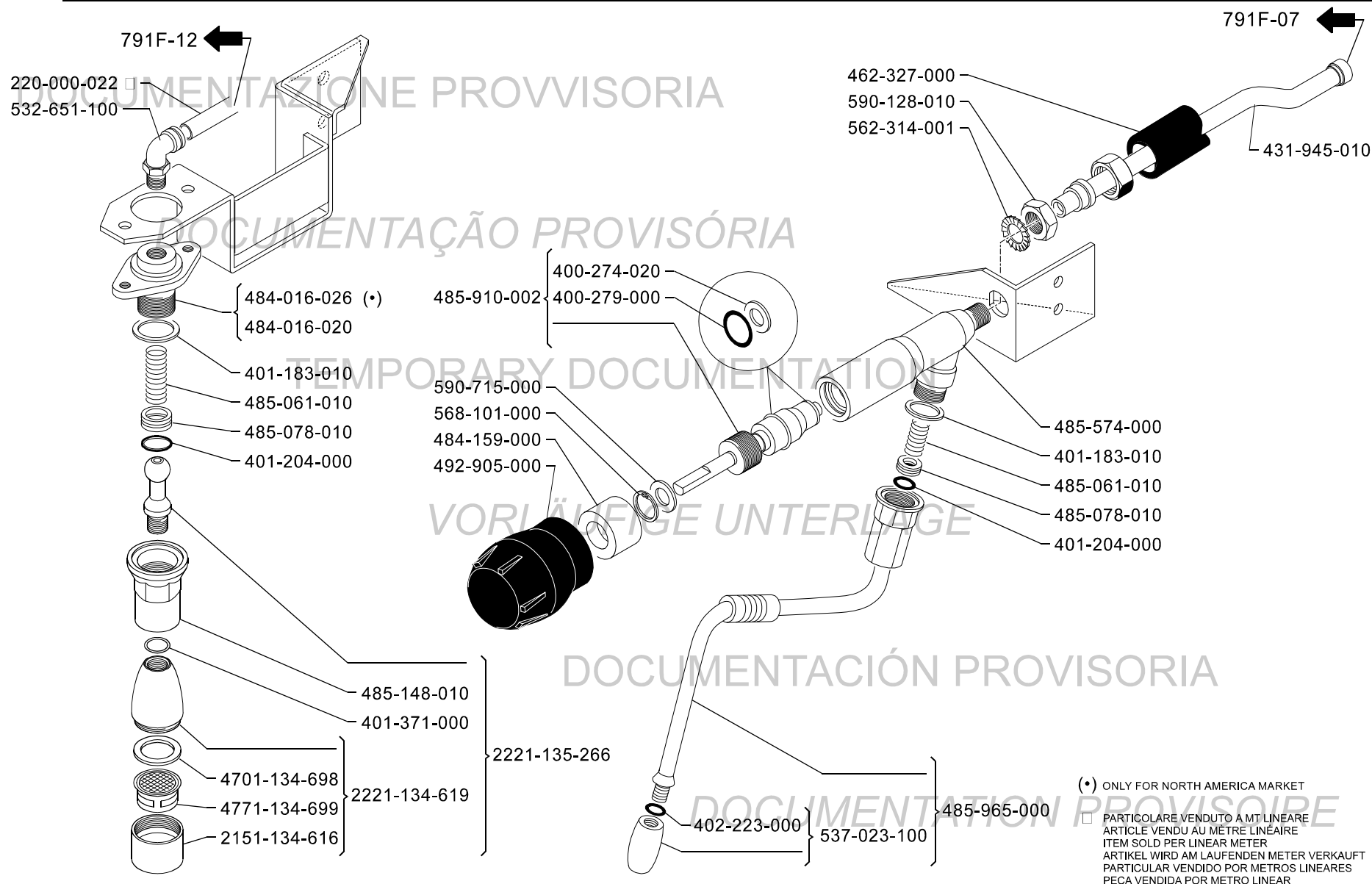




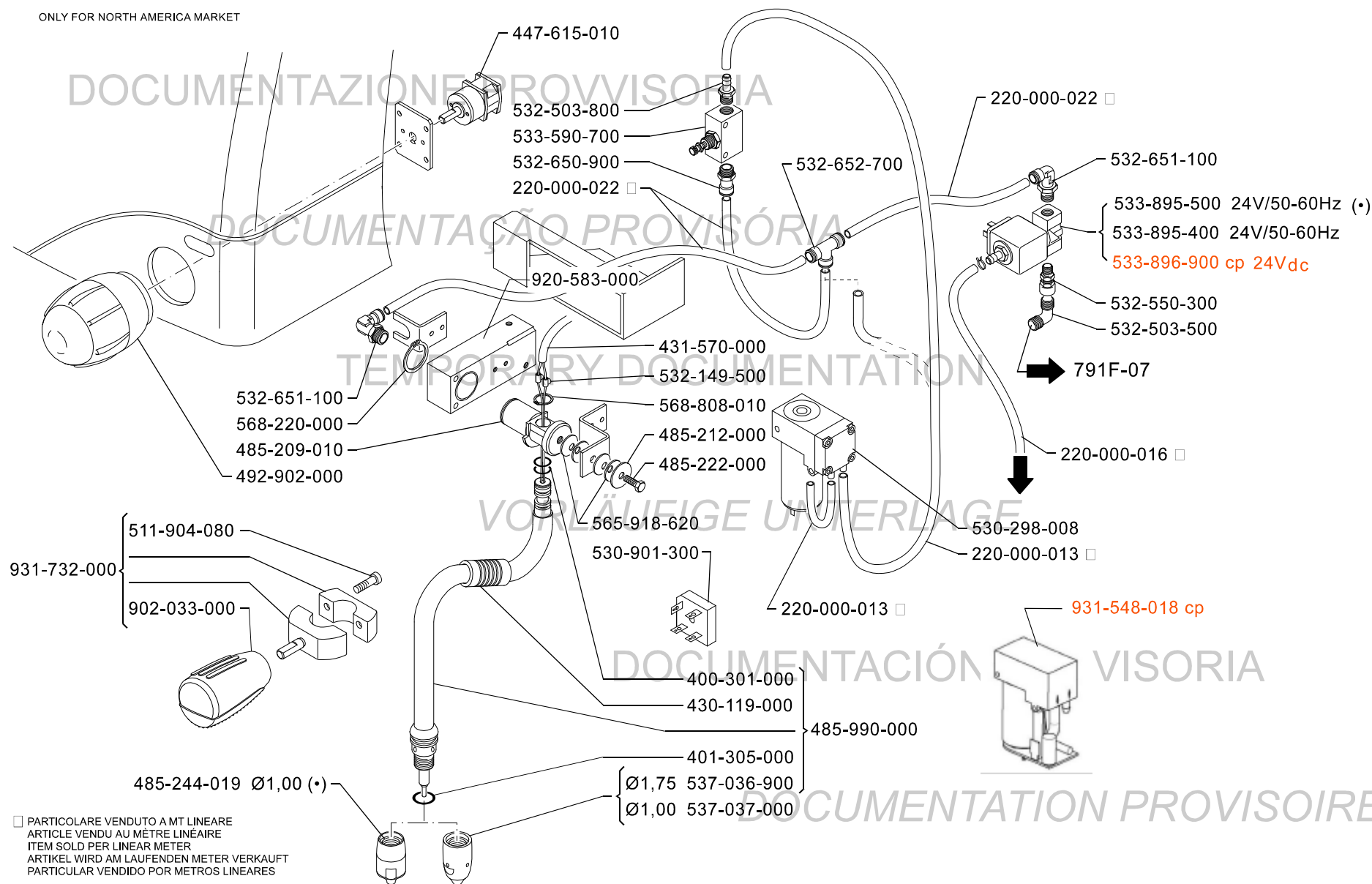


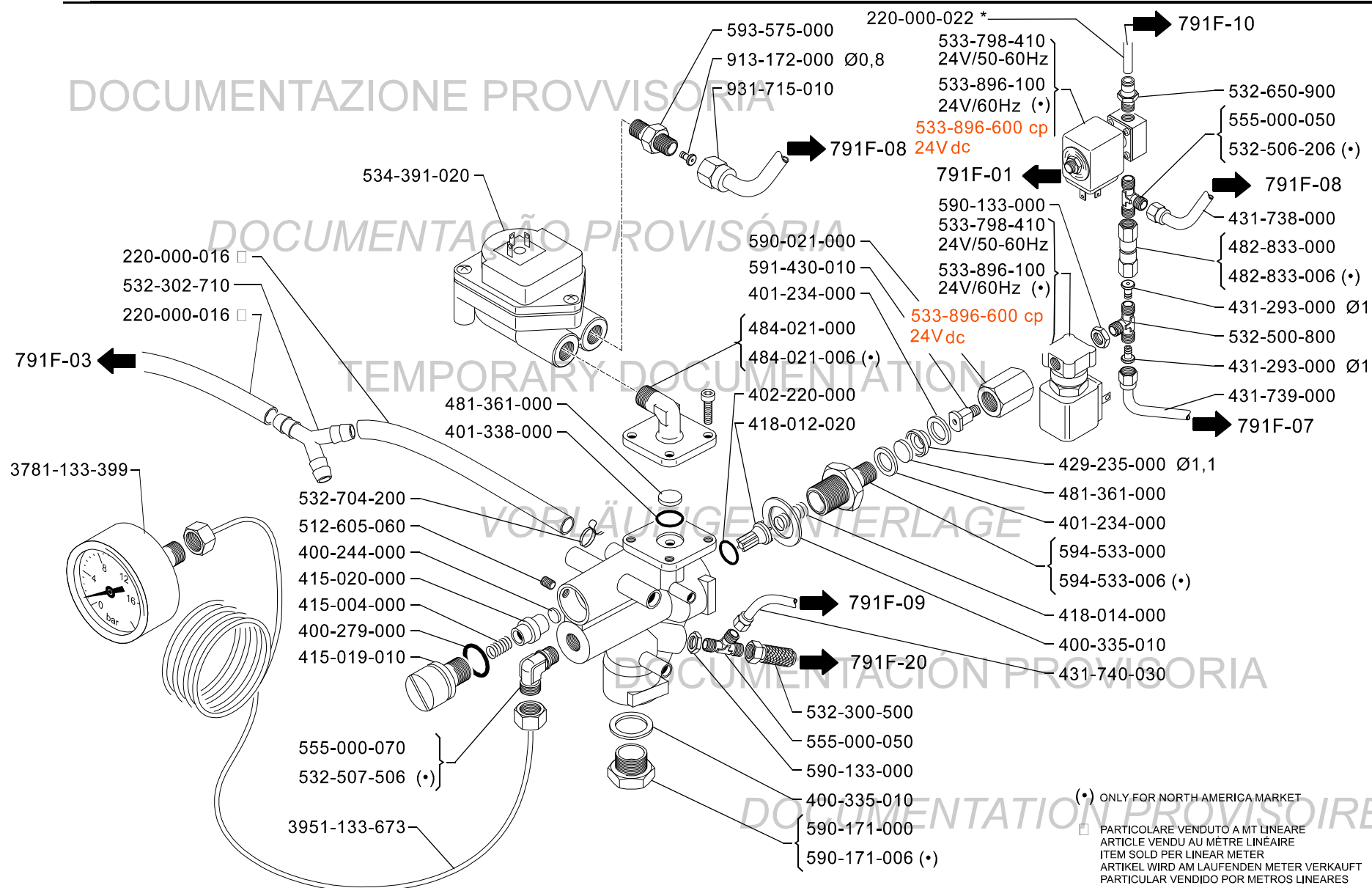




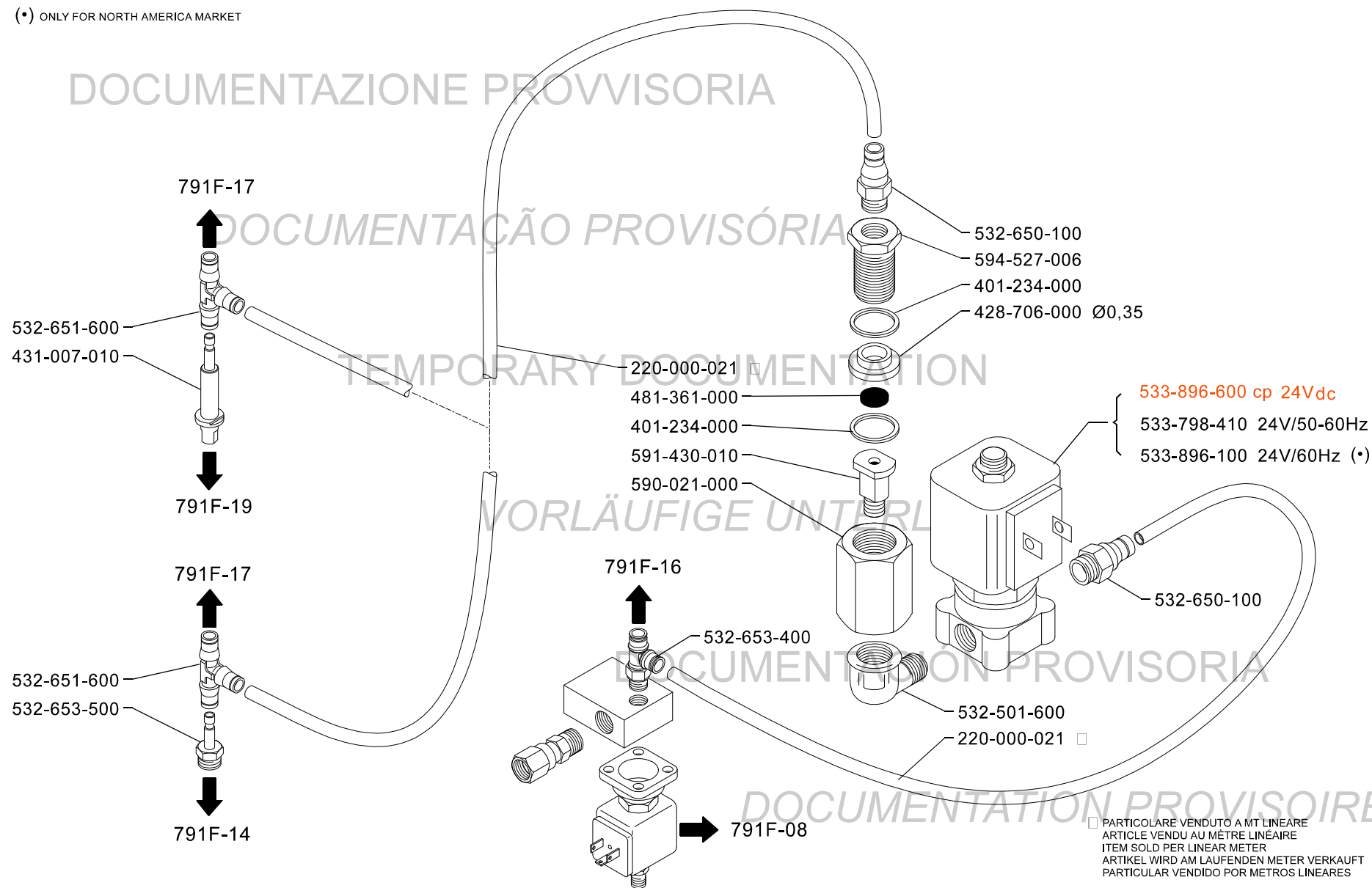


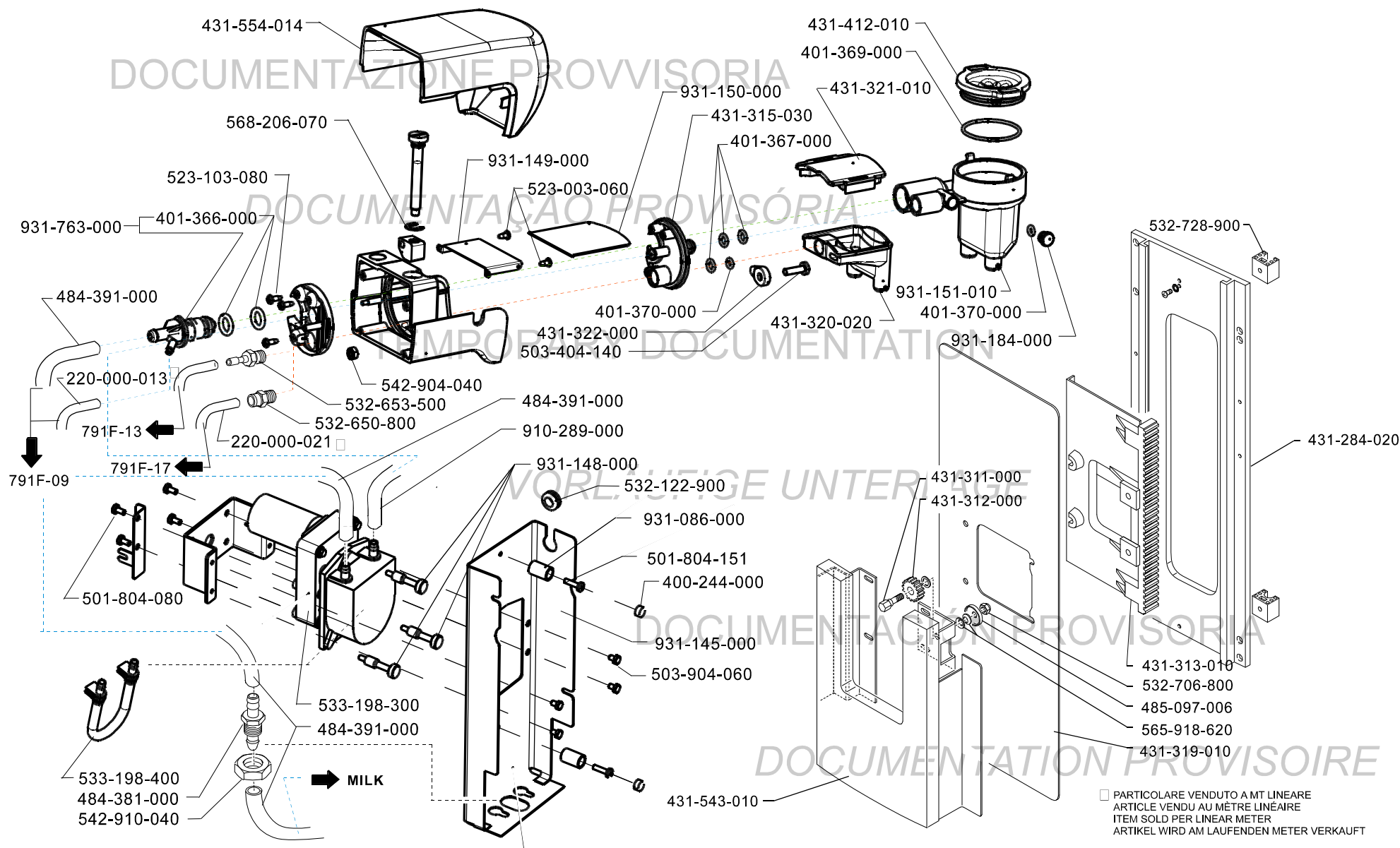
ONLY FOR NORTH AMERICA MARKET

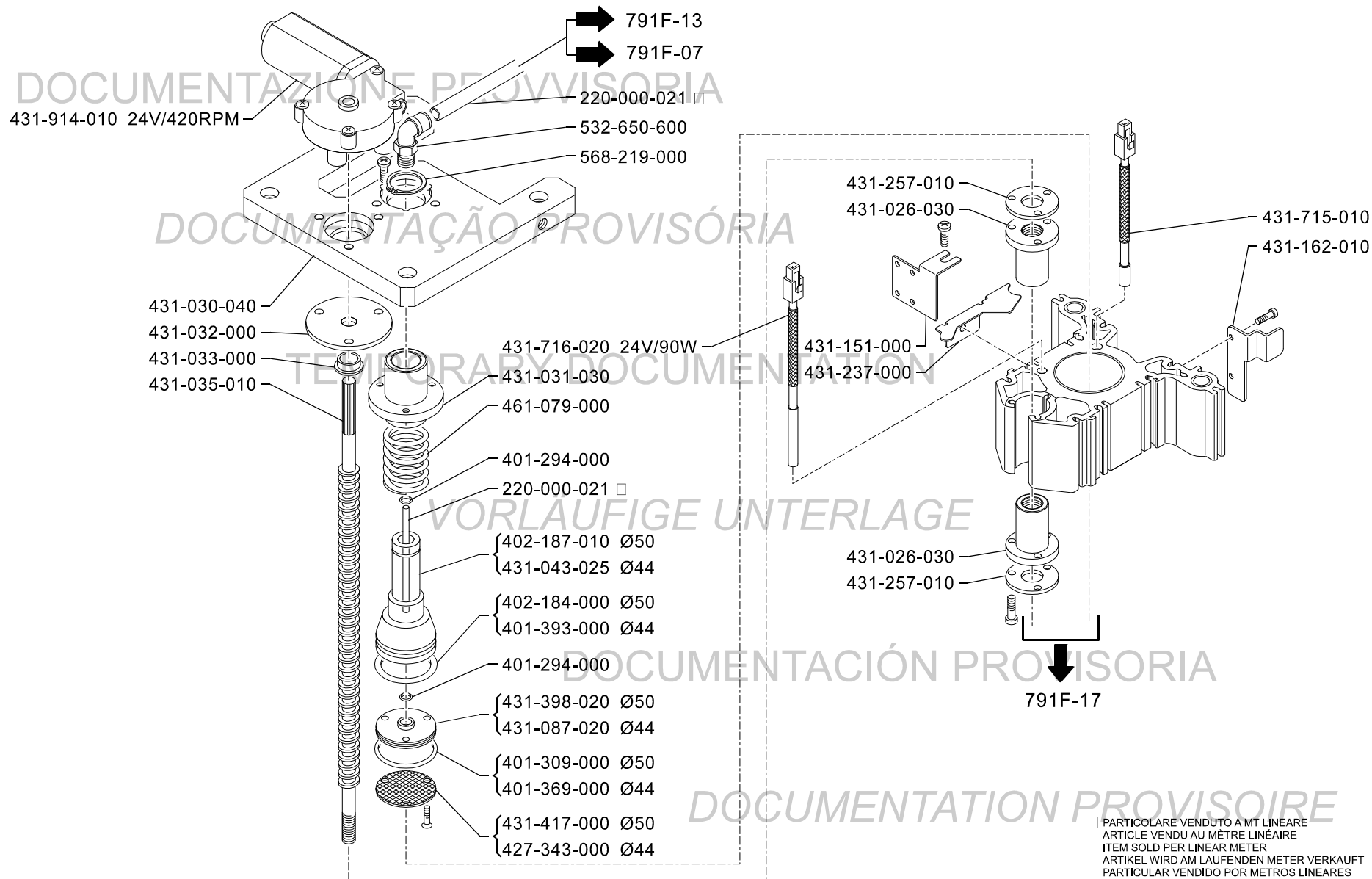


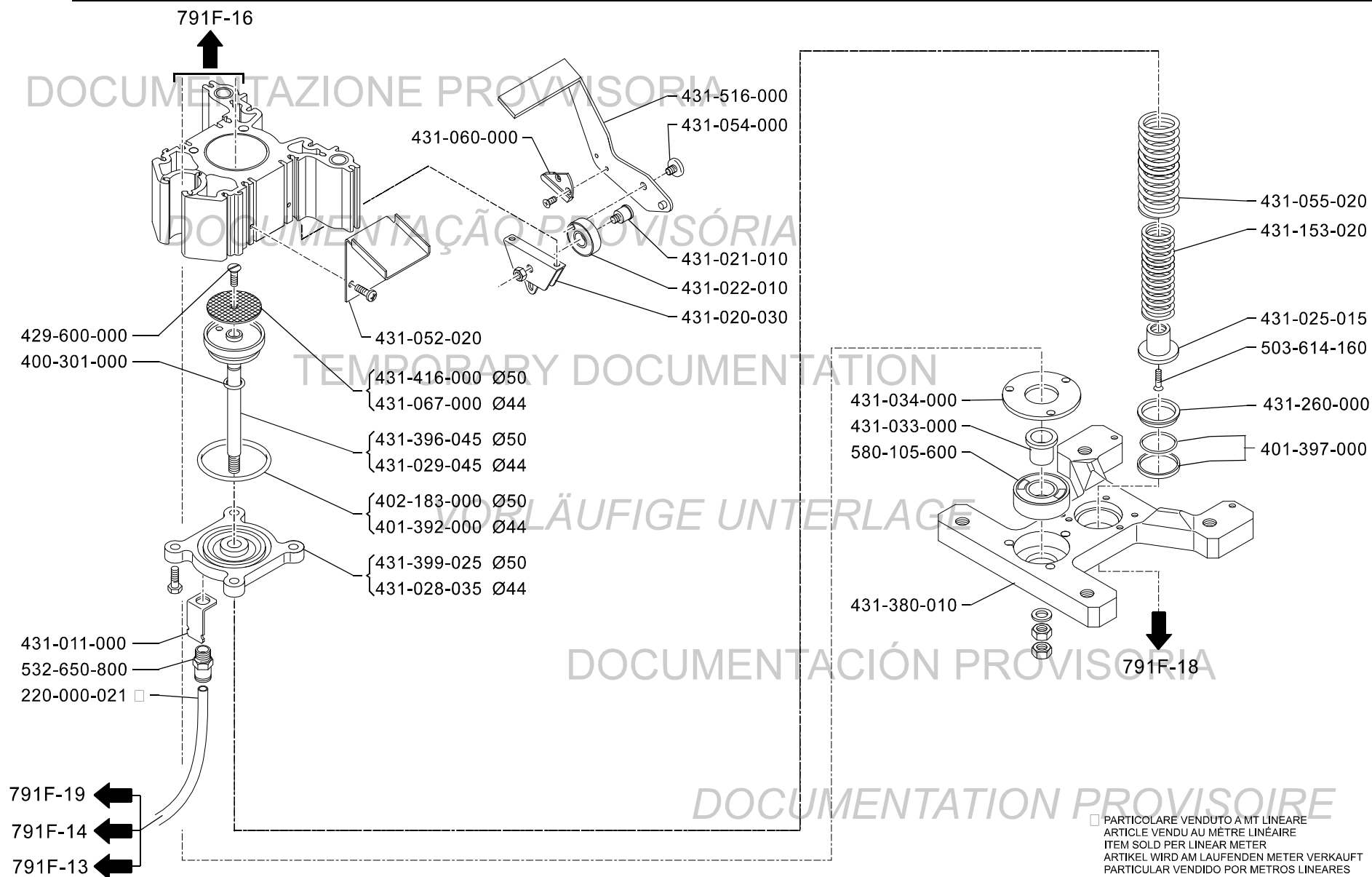


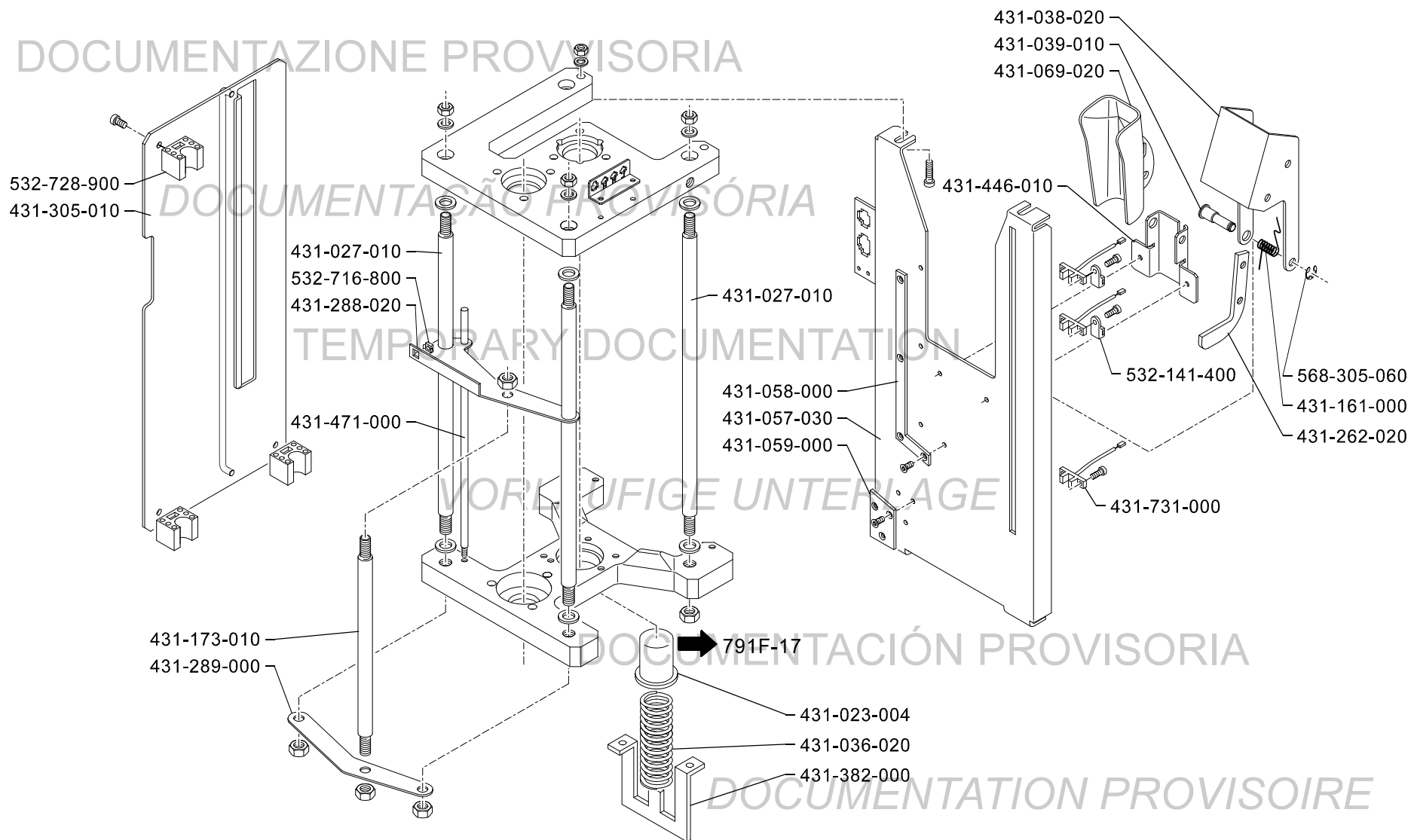
(•) ONLY FOR NORTH AMERICA MARKET



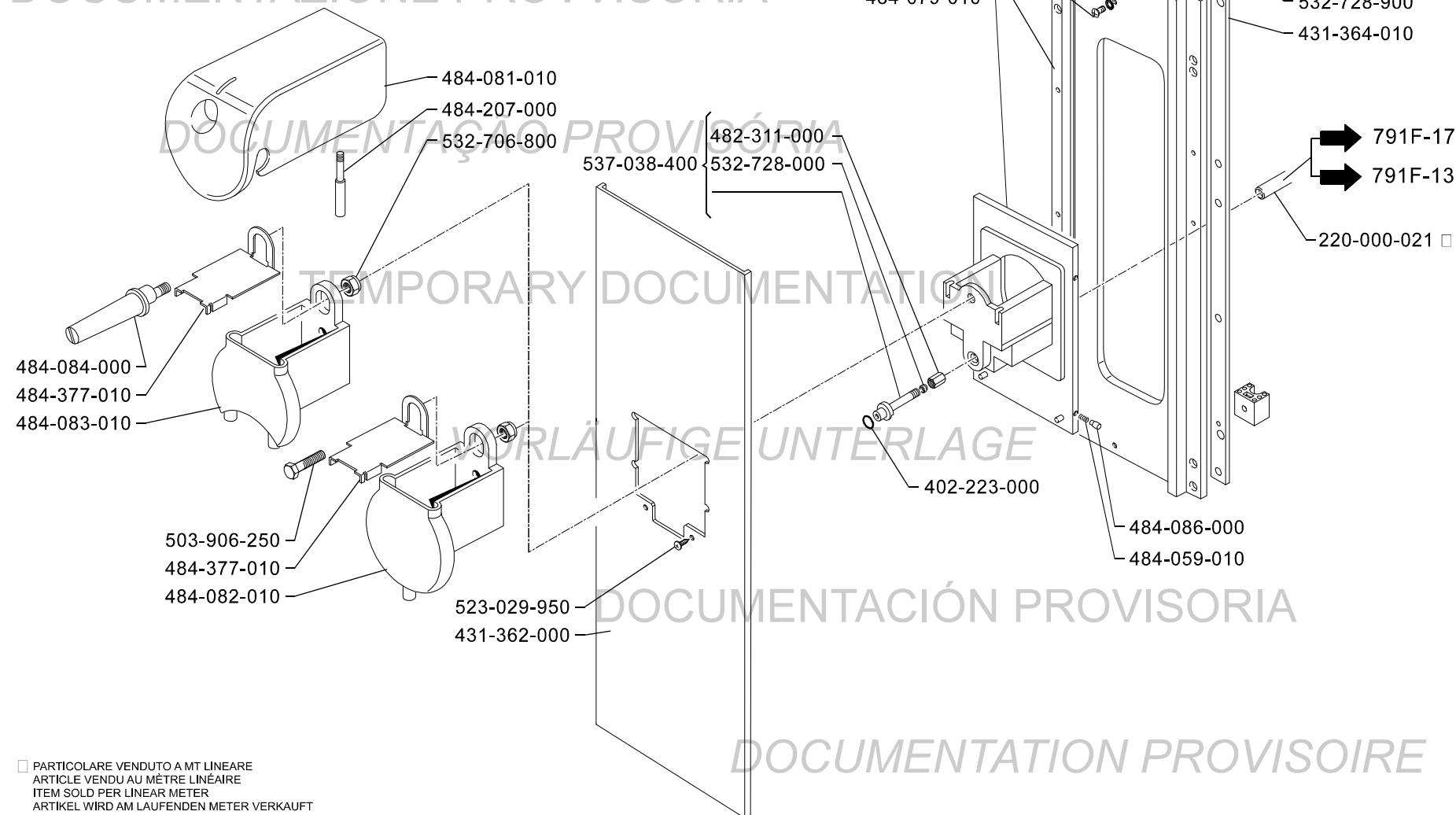






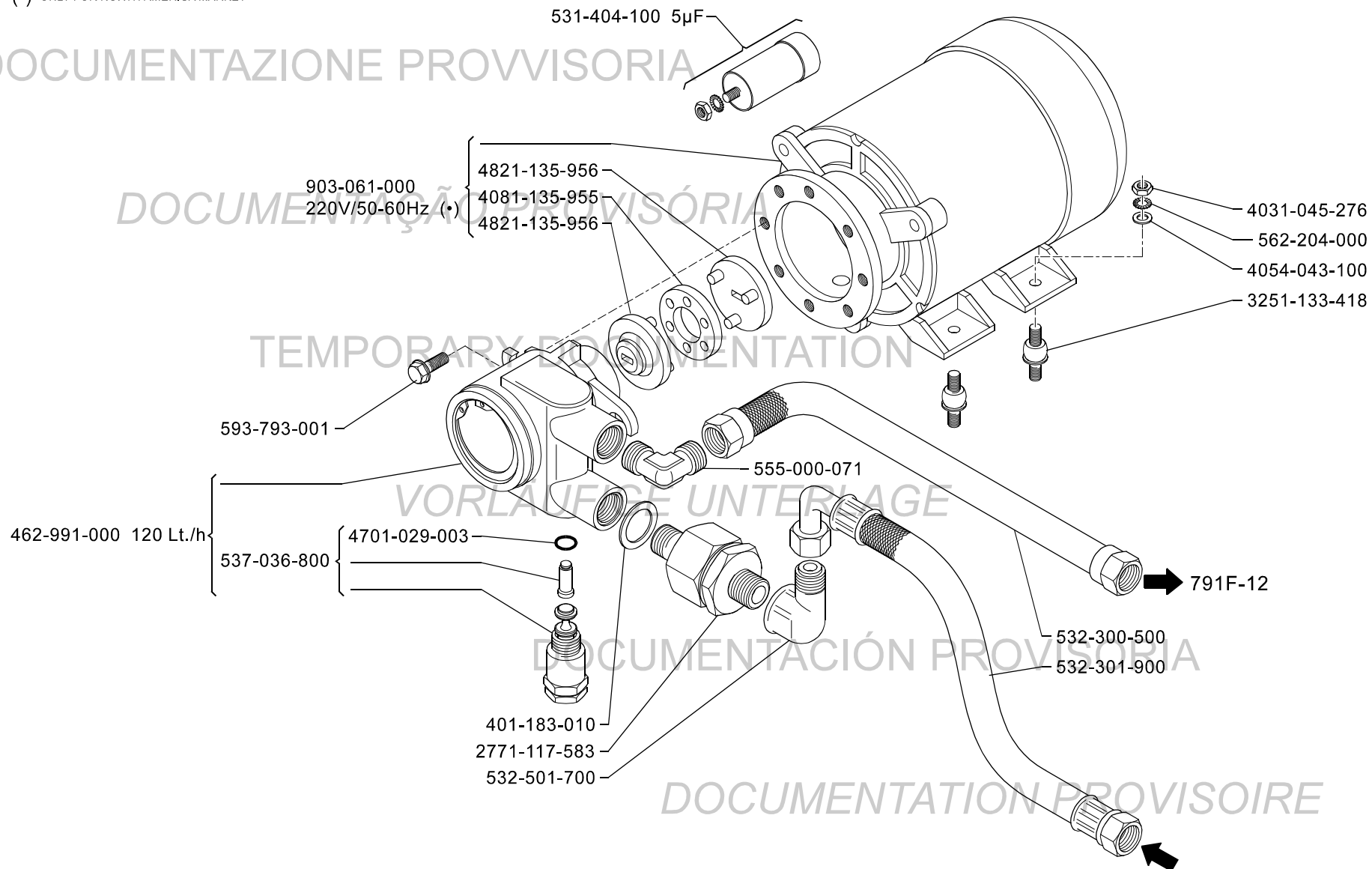


DOCUMENTAZIONE PROVVISORIA

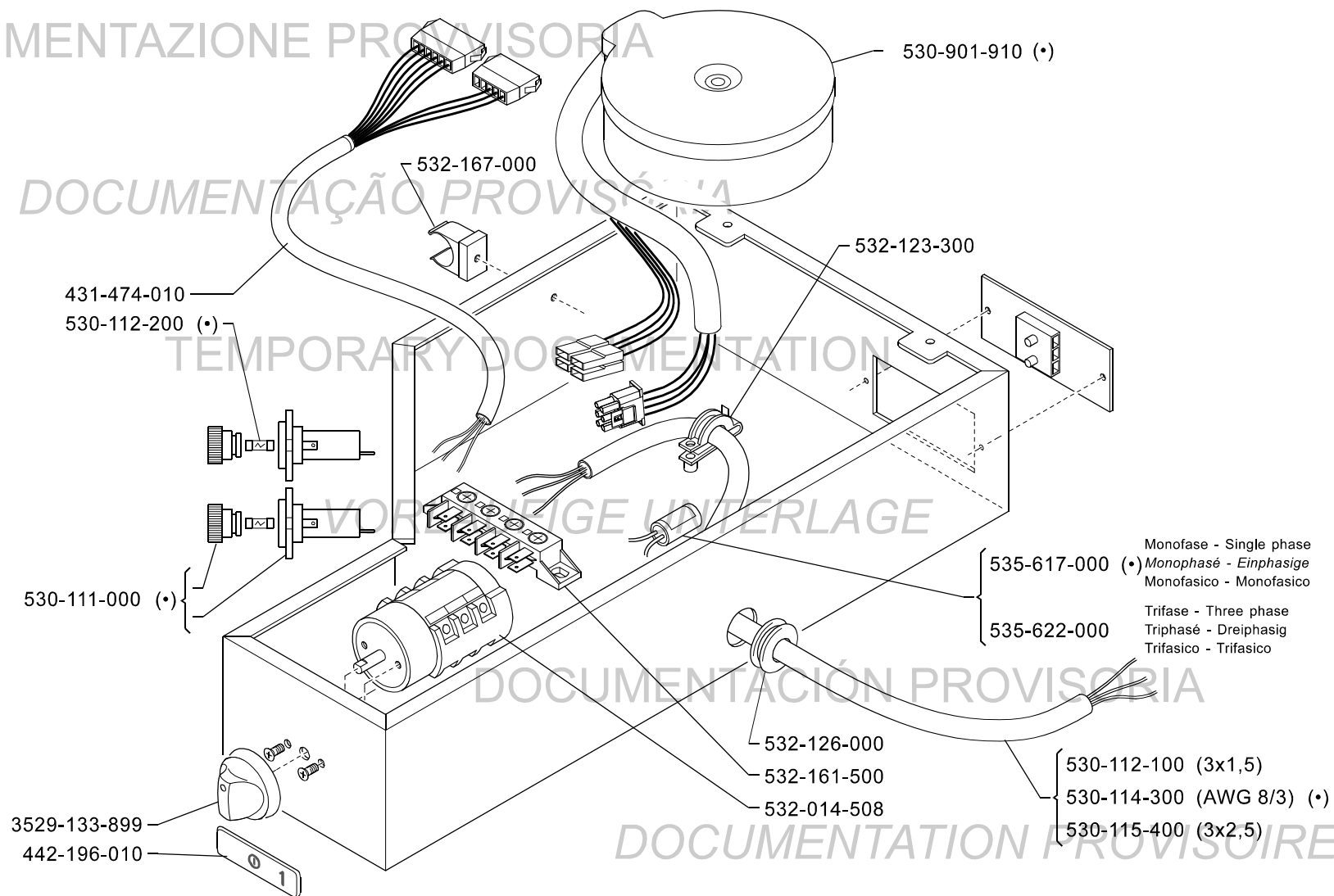


□ PARTICOLARE VENDUTO A MT LINEARE
ARTICLE VENDU AU MÈTRE LINÉAIRE
ITEM SOLD PER LINEAR METER
ARTIKEL WIRD AM LAUFENDEN METER VERKAUFT
PARTICULAR VENDIDO POR METROS LINEARES

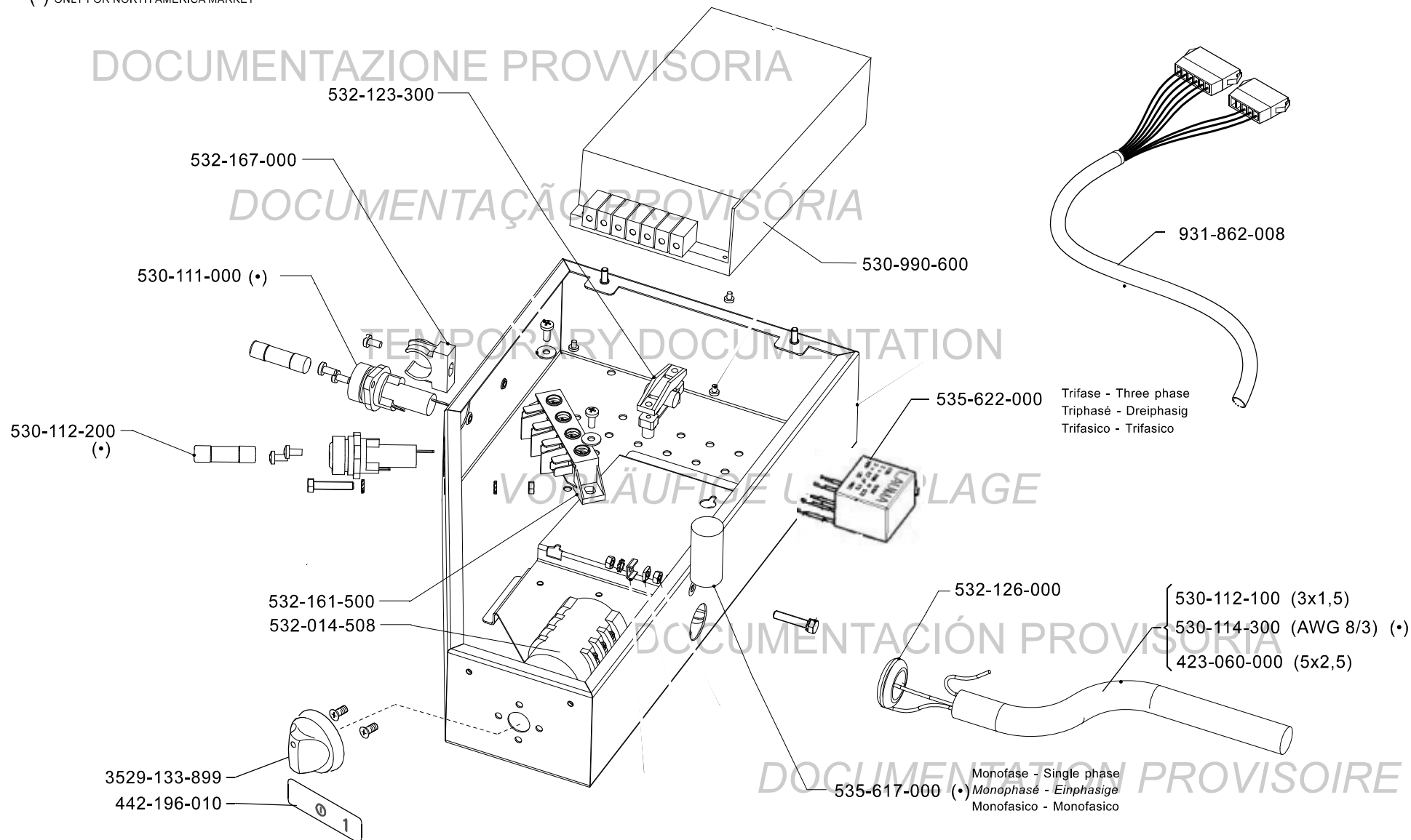
(•) ONLY FOR NORTH AMERICA MARKET

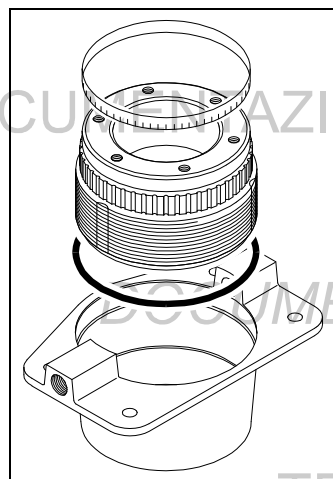


ONLY FOR NORTH AMERICA MARKET



(•) ONLY FOR NORTH AMERICA MARKET

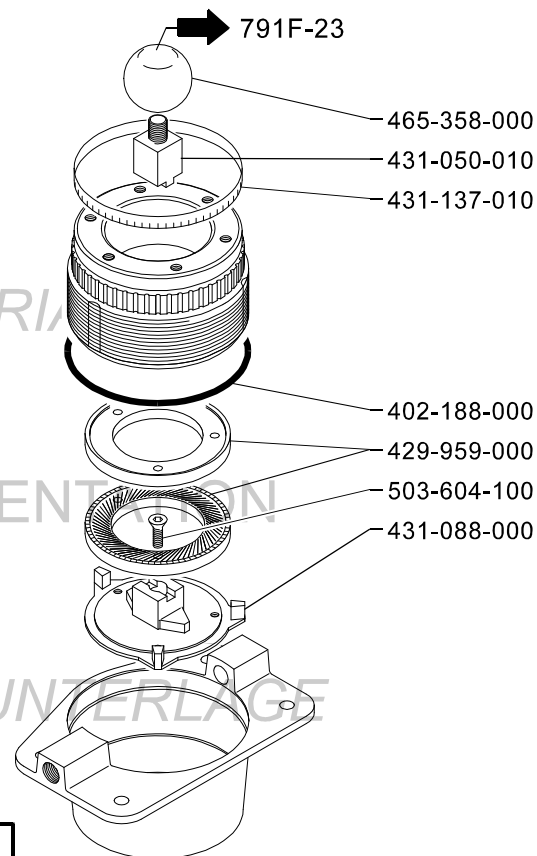




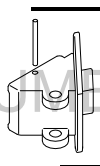
{ 931-738-000 DX
931-739-000 SX

537-050-500 SX

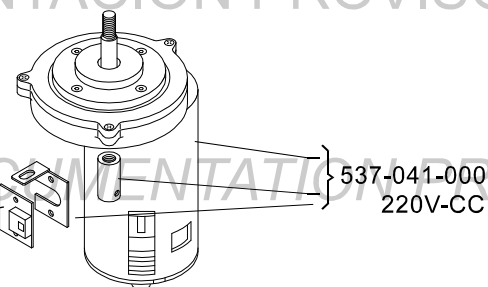
791F-23



537-050-400 DX



484-336-018



431-497-000

{ 537-041-000
220V-CC

